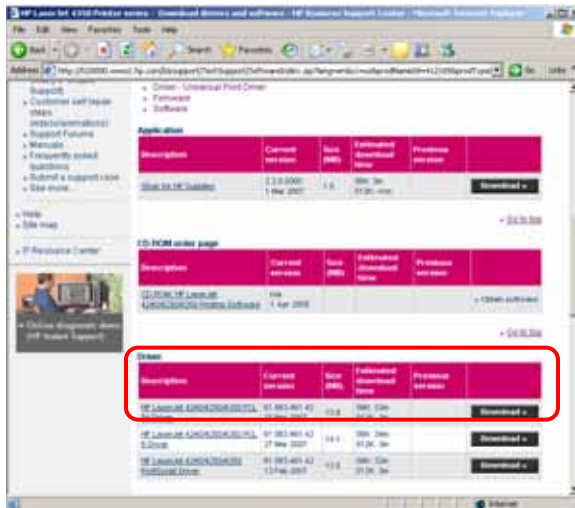
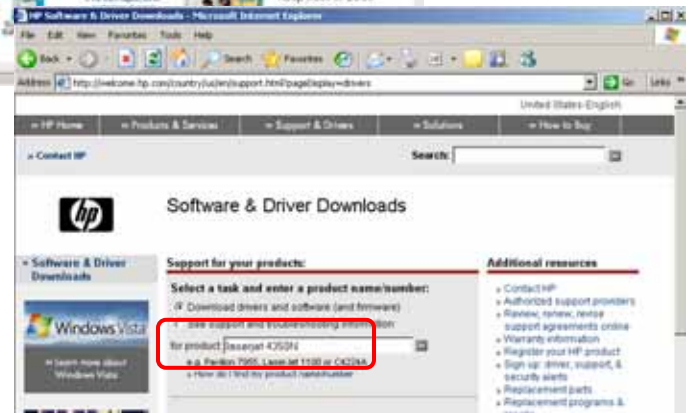


Driver Download

Please open **Internet Explorer** and go to www.hp.com on the hp website please select **Software & Driver Downloads**



Please enter in **Laserjet 4350N** in the space available. In the next window select the operating system that your computer is running. Another page will appear where you select the first driver in the list under the driver heading.



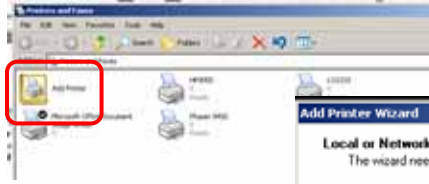
Select **Download** chose **Run** when asked and **Unzip** when asked to do so.

XP Users

Please **Download the Driver First**
Start then to **Printer and Faxes**.

(If you don't see Printer and Faxes go to the Control Panel and find it in there)

Select **Add a Printer**

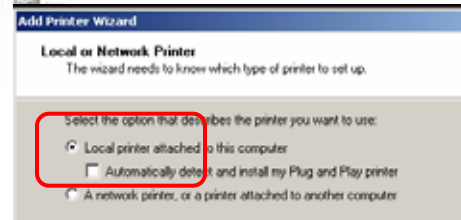


A new window will appear.

Click **Next**.

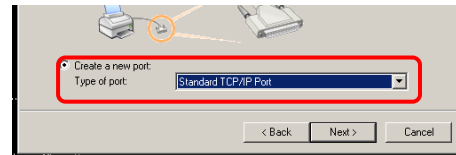
On the next page select **Local printer attached to this computer** and deselect **Automatically detect ...**

Click **Next**



On the next page select **Create a new port** and select **Standard TCP/IP Port** from the drop down box.

Click **Next**



A new window will appear click **Next** on the following window it asks for a printer name or IP address enter an IP from the chart below. Then click **Next** click **Next** again if asked and then click **Finish**

Dorm	IP Address
Tuve	10.1.10.115
East	10.1.10.117
Stavig	10.1.10.114
Granskou	10.1.10.116
Soldberg	10.1.10.113
Bergsaker	10.1.10.118

You will then be asked to select your Manufacturer and Printer. Select **Have Disk...** Another window will open asking for the location of the driver click **Browse...** Under your C Drive there will be a folder titled **HP LJ4x50 Series** Open that folder and open the driver titled **hpc4x50b** in the folder. Click **OK**



After that chose the **LaserJet 4350 Printer** and Click **Next**. You may change the printer name or the default setting if you chose to.

Click **Next**.

Please select **no** for printing a test page.

Click **Next. Finish.**

And you're done!

