



Who Should Attend

- Educators
- Parents
 - There will be an evening parent reception on Thursday, June 10th.*
- Social Workers / Counselors
- Childcare Providers
- Therapists
- Adult Service Providers
- Business & Community Members

Sponsors

- Augustana College
- Children's Care Hospital and School
- Independent Living Choices
- Sanford School of Medicine Center for Disabilities
- Sioux Falls School District
- South Dakota Parent Connection
- Division for Developmental Disabilities
- Holiday Inn Express (Sioux Falls)

Program Breakout Session Strands

- Education
- Medical
- Adolescent / Adult

Nationally Recognized Speakers

Dr. Cathy Pratt

Dr. Cathy Pratt is the Director of the Indiana Resource Center for Autism at the Indiana Institute on Disability and Community located at Indiana University. She is currently Chair of the Board for the national Autism Society and has been honored by the Autism Society of America with the Individual Achievement Award, the 2005 Princeton Fellowship Award, and various awards through NYFAC (New York Families for Autistic Children, Inc.), including recognition from the United States House of Representatives.

In 2008, Dr. Pratt was awarded the Distinguished Service Award by the Indiana Council of Administrators of Special Education. She is a writer and national presenter on a variety of topics related to autism spectrum disorders. Most recently, Dr. Pratt earned her BCBA and is now a board certified behavior analyst.

Dr. Stephen Shore

Diagnosed with "Atypical Development with strong autistic tendencies" Dr. Shore was viewed as "too sick" to be treated on an outpatient basis and recommended for institutionalization. Nonverbal until four, and with much help from his parents, teachers, and others, Stephen completed his doctoral dissertation at Boston University focused on matching best practice to the needs of people on the autism spectrum. Recently, Dr. Shore has accepted a professorship at Adelphi University teaching courses in special education and autism.

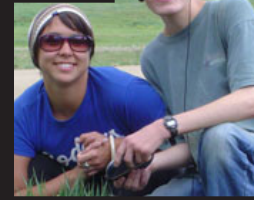
In addition to working with children and talking about life on the autism spectrum, Stephen presents and consults internationally on adult issues pertinent to education, relationships, employment, advocacy, and disclosure as discussed in his books *Beyond the Wall: Personal Experiences with Autism and Asperger Syndrome*, *Ask and Tell: Self-advocacy and Disclosure for People on the Autism Spectrum*, and the critically acclaimed *Understanding Autism for Dummies*.

President emeritus of the Asperger's Association of New England, he serves on the Interagency Autism Coordinating Committee, for the Board of Directors for Autism Society of America, Unlocking Autism, MAAP, the College Internship Program, and USAAA.

Preconference Session

Wednesday, June 9, 2010
8:30am - 4:00pm

Positive Behavioral Supports
Dr. Cathy Pratt



Autism is a complex neurobiological disorder that typically lasts throughout a person's lifetime. It is a group of disorders known as Autism Spectrum Disorders (ASD). Today, one in 110 individuals is diagnosed with autism and it occurs in all racial, ethnic, and social groups. Autism presents challenges in communication skills and the ability to relate to others.

Augustana College 33rd & Summit Gilbert Science Center
June 10 - 11, 2010 8:30am - 4:00pm
605-274-4126 www.augie.edu/autism



AUTISM SPEAKS™
It's time to listen.

Walk Now for Autism

Saturday, June 12, 2010
8:30am - 12:00pm

Augustana College Campus
Kirkeby Over Stadium

For more information contact Jennifer Miller at
605-376-5959 or owensmom@sio.midco.net



Registration

Augustana College

33rd & Summit Gilbert Science Center

June 10 - 11, 2010 8:30am - 4:30pm

\$100 both days, include meals, breaks and handouts.

Graduate Credit and hours toward CEUs available for additional fee. SDDOE renewal credit at no additional cost.

Preconference Session

June 9, 2010 8:30am - 4:00pm

Additional \$75, includes breaks, lunch on your own.

Registration deadline: June 1, 2010

Registration opens February 1, 2010. Registration is limited to 300 people. Registration fee is refundable until June 1, 2010 with a \$25 processing fee. Cancellations must be submitted in writing.

Name: _____

Title: _____

Address: _____

Phone: _____

Email: _____

_____ Pre-Conference _____ Conference

Complete and mail with registration fee to:

Augustana College

Office of Continuing Education

2001 South Summit Ave.

Sioux Falls, SD 57197

605-274-4126

or register online: www.augie.edu/autism

Listing of area hotels provided on request.

Conference program is scheduled between campus buildings. Please indicate if accommodations are needed.



June 10 - 11, 2010 Augustana College Gilbert Science Center

