

Connecting Points



Volume 7 ♦ Issue 4

Quarterly Newsletter of Family Connection

FALL 2003

Hello, My name is Dawn Brende. I have graciously accepted the position of Executive Director at Family Connection. Most of my life has been spent in South Dakota, with the exception of my college years. Currently my husband, three children and I live on the farm, he grew up on, in Baltic.

I attended Mankato State University. My major was corrections and my minor was sociology. I returned to South Dakota to do my internship at the South Dakota State Penitentiary. While interning I was offered a job as the Wiring the Schools Coordinator for Governor Janklow's "Wiring the Schools Program". As the coordinator for 4 years, I had the privilege of working with well over 500 male and female inmates and over 250 school districts throughout South Dakota.

With the project complete and my job, my husband and I were in a position where I had the opportunity to be a stay-at-home mom and his bookkeeper (he is partners with his brother in a trucking company).

For the past three years I have had some very meaningless jobs other than being a mom and wife of course. Feeling lost and unhappy most of the time I began to pray. If you have never asked the Lord for anything before and you are going to, be prepared.



Dawn Brende

I have now found myself another home, Family Connection, and what a comfortable and loving home it is. Words cannot explain what happens when you put all of the extraordinary people who are a part of Family Connection together. There is the devoted staff, supportive board, and last but definitely not least faithful volunteers and donors that come together to provide a place of comfort.

Well that's me in a nutshell. Please feel free to stop in any time to say hello. I look forward to meeting each one of you.

Can you believe it is almost Christmas time again? Once I became a mom I realized how fun and comforting it is to give. It wasn't until I got older that I realized how rewarding it feels to give to those in need. The families who come to us sometimes come with very little self-respect or dignity. We like to provide them with as much love and dignity as we possibly can. I pray that our mission touches your hearts. Lets see how prepared Family Connection is when prayers are answered.

It's hard to say in October but I wish you all a very Merry Christmas!

Dawn Brende
Executive Director.



Our Ongoing Mission...

To provide temporary shelter, emergency supplies, services and support to the families of inmates in an ongoing effort to facilitate visitation, and strengthen the family bond.

A Look Inside...

History Points	2
Hospitality Points	3
Children's Points	4
Volunteer Points	5
Donations	6
History Points can't	7

Connecting Points

History Points

Ann Marie Rossing tells of the beginning of Family Connection. This history will continue throughout its tenth year- 2003.

The Board of Directors had decided to open the house for guests on Mother's Day weekend, May 12, 1996.

Finally, after two years of planning and praying for this ministry, we were looking at a date to officially open the Hospitality House for guests. The dream so many had invested in and put their faith in was becoming a reality. A clean up day was worked out and the house put into order. Press releases and invitations were sent out. Wayne Petersen arranged with the Chamber of Commerce the day for the ribbon cutting.

Board member and former warden for the South Dakota State penitentiary, Herm Solem, invited Carole Hillard, the Lieutenant Governor of South Dakota to make some remarks, and we scheduled a ribbon cutting with the Chamber of Commerce for May 7, 1996 at 4:00 p.m. This was ironically the beginning of Mother's Day weekend. The weather cooperated and we had a turnout of over 100 guests for the occasion. We provided tours of the house and refreshments. Monsignor McEaney led the invocation, Herm Solem made some remarks, I gave a thank you speech and Carole Hillard shared some further remarks. That day we received a donation from the men in Unit C in the penitentiary to help defray the cost of operation. Considering the wages and opportunities these men had to earn money, their gift was one of tremendous generosity. They gave from what little they had to serve families they might never meet.

There was a brief write-up in the Argus Leader with photos of the occasion. Those of us who were there could attest to the energy and excitement we experienced that day. With everything ready, our first guest arrived from Illinois two weeks later.

When we first started this ministry, we thought that when there are guests in the house, someone should be there with them at all times. Anne Burkard, the Hospitality Director, spent many nights and days in the house. Anne was generous with her time and talents in many different areas but her greatest gift was one of hospitality and the warmth with which she welcomed our guests. She prepared meals from practically nothing and did these things well and quickly. We often marveled at her talents. She enlisted a few other volunteers who helped and did overnights also. One of these women was Pearl DeLorenzo. Pearl often volunteered at St. Francis House and gave many hours of her time to the ministry we provided. One of my favorite

images of Pearl was her entering the house carrying fresh fruit for the guests. She brought little extras to make our guests feel at home.

Everyone was a part of Anne and Pearl's "family". Pearl was recognized by Family Connection as a Jefferson Volunteer nominee a few years later.



Ann Marie Rossing

Another faithful overnight and daytime volunteer was Dorothy Romain. One of her beautiful water colors still graces the walls of the house. Dorothy also gave of her time unselfishly. We had volunteers from RSVP and Job Service as

well. Anne often tried to help the younger volunteers like Sandy Parham from TANFF in their school-work and training. Our guests and volunteers benefited from the gracious care of those they encountered at the Family Connection House.

In June the little house (414 West 7th) sprung a leak in the roof. The ceiling was caving into the kitchen. Anne was a wonderful sport about the situation, but the repair work needed to get done. Aid Association for Lutherans provided \$400 for this project. I wrote a letter to Governor Janklow to see if we could have help from the inmates to re-roof the little house. It was September before we got all our supplies gathered and help lined up. By this time we had had a number of guests staying at the Hospitality House. Wayne Peterson and the late Don Fountain headed up the project to replace the roof on the 414 West 7th Street house. Don Fountain died recently, and will be remembered by many for the selfless giving of his time and talents to make a place like Family Connection more secure.

It was a warm September Sunday and the trustees were working hard. There were about a dozen men helping from the prison plus those supervising. Wayne Petersen approached the Coca-Cola Company who donated sodas for our workers. The bees were very interested in the soda as well and one of the men was stung that day and taken to the emergency room because he was allergic to bee stings. A newspaper article by the Argus Leader was written about the project. The trustees were proud to be doing something to help other inmate families.

I shall never forget the amount of roofing material on that house. They scraped and scraped until they got to the bottom. The house had layer upon layer of shingling all the way back to the original shingles. The first set of shingles were anchored with square nails put on

the house when it was built in 1893 and we actually found those original shingles!!!!. When the project was complete, there were over 400 man hours donated to replace that antique roof.

Anne Burkard, the Hospitality Director, prepared some of the most amazing meals for the men who worked. Others from some nearby churches also brought hot dishes, donuts and snacks for the workers during this three day project. Sunday afternoon my husband David and I went by to help with the lunch. A young mother with her two small children were there preparing to return to Rapid City. We offered for her to help herself and the children to lunch before she left. She was six months pregnant with a third child and her husband was just beginning his two year term in prison for DUI. As she was preparing her meal, I asked her how the visit went. She broke down in tears because this was their first visit, she had never been in the penitentiary. After she had time to regain her composure, she shared that she was in the midst of a dilemma about what to do with her family. She was considering moving her small family to Sioux Falls to be nearer to her husband. She recognized that all her support and family was in Western South Dakota. She also had a job and church there. Her oldest was in school there but felt that she should move so her children could be closer to their dad. This choice would leave her with few resources to support her family. She decided that in the end, it would be better to remain in her community. Having the hospitality house as a resource when she comes to visit made the choice a little easier since she could afford to visit if she did not have to cover two or three nights of motel expenses in addition to gas and food. Family Connection would help her to, "help keep her family together while they were apart", without making a drastic move that would undermine all the supports she had in place.

KELO, KSFY and KDLT all took interest in the story of how trustees from the prison were coming to the hospitality house on their day off to help with the roofing project in an effort to help families of other prison inmates. The Argus Leader did a nice story as well. I had the opportunity to speak at the Downtown Rotary meeting the following Monday. There were a number of special opportunities offered to us as a result of the program. We found we might be eligible for a Gannet Foundation Grant and one from Midcontinent Communications. That speaking opportunity helped Family Connection to be better known in the Sioux Falls business community.

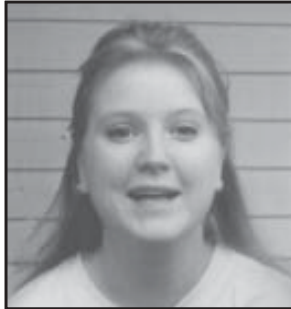
The summer months began a pretty busy schedule of housing our first guests. A faithful volunteer, Ruth Thennis, who stayed many nights with our guests was in the process

con't on page 7

Hospitality Director's Points

Well it's only October and already we are gearing up for the holiday season here at the Hospitality House. It was a very busy September and it's starting to be an even busier October. We expect that trend to continue since already we have reservations for November and December. We are getting our usual plans in place for the families that come to visit during this exciting season.

In November we are again planning on having a "potluck" Thanksgiving dinner in which each guest helps to contribute to the meal. This contribution can come in the form of a dish to pass, setting the table or cleaning up. I made my first Thanksgiving turkey last year and pulled that off without a hitch or a fire so I am hoping for a repeat performance this year. One of our guests from Pierre came last year with bags and bags of groceries and whipped up such a feast all of us were



Jennifer Koepsell

well fed for the rest of the week. Our Thanksgiving dinner has always been a great experience for our families to share their experiences and what they are thankful for. Good food and good conversation can bring a lot of healing over a simple dinner time meal.

In December we have a Children's Connection Christmas gift giveaway which I expect will be the even bigger than last year. Last year we were able to provide Christmas gifts for the children and the moms that we serve. We also make Christmas treats with the families and decorate the house and Christmas tree.

We really try to be a home away from home during what is often time a very stressful time. Hopefully this "family" can fill a small part of the void while they are away from their families.

Jennifer Koepsell
Hospitality Director

Family Connection Staff

Dawn Brende Executive Director	Jennifer Koepsell Hospitality Director	Mary DeJong Children's Connection Dir.	Carol Y. Larson House Assistant
-----------------------------------	---	---	------------------------------------

Board of Directors

President Mary Montoya
 Vice President Bonnie Gregerson
 Secretary Maureen Schultz
 Treasurer Connie Matsuda
 Members Mary Ann Giebink
 Patty Hollenbeck
 Leroy Iseminger
 Leonard Johnson
 Linda Pashby
 Traci Smith
 Nancy Thomas
 Terry Welk

Advisory Board

Dave Christenson
 Del & Bernice Duncan
 Bishop Norm Eitrheim
 Mike Flynn
 Rev. Roger & Ruth Fredrikson
 Phyllis Fromelt
 Kelby Krabbenhoft
 Bonnie Larsen
 Steve Lee
 Ann Marie Rossing
 Herm & Maisie Solem
 Mary Lou Steib
 Ronda Stenslend
 Monte Walz

Wish List

Kitchen Items

Fresh vegetables & fruits
 Individually wrapped snacks
 Juice & cold drinks
 Coffee (decaf & reg)
 Hamburger
 Napkins
 Breakfast Cereal

Housewares

Laundry Detergent
 Soft soap refills
 After shower spray
 Toilet Paper
 Glade plug-ins and refills

Children's Connection

Polaroid camera & film
 School glue
 Children's scissors
 New Children's Toys
 -art supplies
 -board games
 -sports equipment

Office Needs

Postage Stamps
 Colored Copy Paper
 Small White Envelopes
 Toner for Canon NP2120 copier
 Ink for HP 812C printer
 Computer address labels
 Calculator
 9x12 envelopes

Gift Certificates

House one family (\$30)
 Grocery stores
 Walmart
 Office Max
 Phone cards
 Taxi Cabs
 Gas Certificates

Special Needs

Tape measure
 Dandelion digger

Furnishings

Dehumidifier
 Sectional couch w/pullout bed

Your gifts help to provide a dignified, comfortable place for our guests. Thank you for your generosity. If you would rather we buy the item, please mail a check to Family Connection, designated for "Wish List" item of your choice.

Children's Connection Points

"Two in Every Hundred" describes a chilling statistic. It's the average number of children in the United States who have a parent in prison. In a recent survey completed in the correctional facilities in South Dakota, 63.4% of the inmates who responded said they have minor children, with an average of 2.11 minor children per inmate parent. As of August 31, 2003, there were 2,797 men and 314 women in South Dakota correctional facilities. Therefore, statistically, there are 4,162 minor children who are affected by the imprisonment of adults in South Dakota.

Children's Connection provides support groups for children who must deal with the effects of having an incarcerated parent. In these groups, statistics are replaced by the individual lives of children facing a wide array of circumstances. Some have had a parent behind bars their entire lives. Some will be adults when their parent is released. Some have both parents in prison. Others face the uncertainty of a parent who is newly released and struggling.

Children live with the other parent about 66 percent of the time after one parent is imprisoned. In other instances, they live with grandparents, foster parents, other relatives, or friends. Siblings may be separated; and children are often forced to relocate to another community or school due to changed living conditions. The specifics vary. The constant is that these children and their families need support.

Our goal at Children's Connection is to help children see themselves as worthwhile so they will be more able to form positive relationships, resist negative influences, and make healthy choices. We will encourage and reward development of the following indicators of personal and

social responsibility: improved school attendance, decreased disciplinary referrals, improved grades in reading and math, and increased participation in extracurricular activities. We believe that these behaviors will help students find a path that will lead to increased success.



Mary DeJong

As concerned community members, we can be aware of the fact that children and families with a loved one in the penal system have unique experiences, needs, and challenges and, often, limited resources. However, the support we offer needs to come from a belief in their strength and worth rather than from a belief that they are somehow defective and incapable. Thank you for all that you do to help and support the work of Children's Connection. I hope that you are richly blessed.

Mary DeJong
Children's Connection Director



Inmate Family Support Group

1ST & 3RD Saturday each month
1:30-3:00
303 N Minnesota Ave
Family Connection



This space is for our guests from all over the globe to share recipes with each other. Thank you to all who have submitted recipes- we are looking forward to more!

Waldorf Muffins

- 3 cups flour
- 2 tsp. baking soda
- 1/2 tsp. salt
- 1 tsp. cinnamon
- 2 lg. eggs
- 1 1/2 cups sugar
- 2 tsp. vanilla
- 3/4 cup real mayonaise
- 2 cups chopped apple
- 1/2 cup finely chopped celery or nuts (optional)

Beat eggs with vanilla & sugar, add dry ingredients, mix in mayo, apples and celery or nuts. Fill cupcake tin 1/2 to 3/4 full. bake 30-35 minutes at 350 degrees.

Barbara Waff
Wareham MA



- We have speakers available for church or civic group meetings,
- We have a videotaped walk-through of the Hospitality House,
- We have printed material about our programs available to the public,
- We invite your group to hold your meeting at the Family Connection Hospitality House. Call 605-357-0777 for more information or reservations.

Volunteer points

In Loving Memory...

Don Fountain passed away last month, leaving very wonderful memories of him here at Family Connection. Don was a devoted volunteer who was often at the Hospitality House willing to give a helping hand in the upkeep and the maintenance. From the time of the purchase up until he got sick a year ago, Don was involved with such tasks as fixing the roof, storm doors and many maintenance tasks (including the personal purchase of materials needed). He contributed his time, talents and energy never saying "no" when asked to do something. Don was a generous volunteer who will be greatly missed.



Special Thanks...

Lori Apple -for being willing and available for your services throughout the summer.

Augustana Students -for taking a Saturday to do fall cleaning at the Hospitality House.

Yoshi Sato - for keeping our yard and flowers looking wonderful



Carol Y. Larson

Carol has had a busy summer answering phones, writing thank you notes, greeting guests, working on the computer, etc... She considers working at Family Connection a most fulfilling job. Her new hours are Monday-Friday 9:00am-1:30pm.



Special Events

Yonkers Community Day Event, November 22nd

- Purchase a \$5 coupon packet from Family Connection and we will retain 100% of the packet price.
- Use the \$5 coupon to save \$5 on any single regular, sale or clearance priced item. **Think of it as getting paid back for your \$5 donation.**
- Use each of the six 20% off coupons to save 20% on any single regular, sale or clearance item. Best of all beat the day after Thanksgiving crowd!!!



Gift Wrapping at Barnes and Nobles

Family Connection will be gift-wrapping at Barnes and Nobles for donations Dec. 1-3rd & Dec. 7-9th from 10am-9pm How wonderful! Get a great gift, have it wrapped and donate to a good cause.

Children's Connection Gift Giveaway

The gift giveaway provides gifts for children and their parents for Christmas. Gifts are chosen by both parent and child, the presents are wrapped and treats are eaten. This is all part of a Christmas party that Family Connection hosts.

The party will be in early December, if your church or organization would like to donate/sponsor the giveaway please contact Family Connection.

Human Race

I would like to extend a special thank you to everyone who participated in the Human Race. With your help we placed 2nd as a fundraiser and received two \$100 gift certificates from Home Depot.

For more information or specific dates contact Family Connection

E-mail address:familyconnection@hotmail.com

Phone: 605-357-0777

Gifts/Grants

Please remember us in your Wills and Trusts

Blessed are the givers...and grateful are the receivers

Individuals

Ahrendt, Wally & Susan
Anderson, Dorothy L
Baker, Rita & Donald
Berah, Evelyn
Best, Betty B
Blashill, Richard E & Evelyn L
Braithwaite, Richard
Brechtelsbauer, Cathy & David
Crandel, Nancy
Dardis, Sadie
Eitheim, Norman
Engberg, Earl & Leona
Hagin, Bruce & Beth
Jansen, Dorothy
Joyce, Mr & Mrs James Jr.
Larson, Dorothy M
Larson, Katherine
Leonard, Greg
Matsuda, Connie & Clancy
Meland, Norris & Lorraine
Monson, Shirley
Nearhood, Mr & Mrs
O'Dea, Doris
Olsen, Art L & Ruth A
Ronning, Doreen & Melvin
Rossing, Phillip
Sato, Yoshiko
Schoenfelder, Coralea
Smith, William & Connie
Steensland, Boyd & Lorraine
Thompson, Keith & Gloria
Uhre, Florence
Van Hul, Roger
Warner, Harold & Carol
Wynkoop, Walker

Organizations

Epiphany Catholic Church Youth Group-
Minneapolis
First Baptist Church
First Lutheran Church
First Presbyterian Board of Deacons
First Presbyterian Church Women
First United Methodist Church
Lutheran Church of Dell Rapids-WELCA
Our Savior's Lutheran Project
Patience Circle
Royal River Casino
South Sioux Kiwanis Club
Storla Lutheran Afternoon Circle



Memorials

In Memorium of Roger Onstad
Given by Leroy & Orpha Iseminger
In Memorium of Rose Wilcoxon
Given by Leroy & Orpha Iseminger
In Memorium of Brad Smith
Given by his mother, Jacqueline S Bjorke

Grants

Citibank of SD
River Park Foundation-Pierre
Sioux Falls Kiwanis Club
SF Area Community Foundation-Charles
Austin Family
Tieszen, Jeanne F J-Marion, SD
X-Cel Energy

In-Kind by Individuals

Anderberg, Joan
Apple, Laurie
Bowden, Esther A
Braithwaite, Richard
Byllesby, Julie
Defender, Bridget
Estes, Doris
Garrison, Pastor Karen
Giebink, Mary Ann
Iseminger, Leroy & Orpha
Johnson, Leonard
Lane, Jennifer
Larson, Vi
Malone, Loretta & Gary
Mantoya, Mary
McQuire, Helen
Nachtigal, Jerry
Nygren, Karla
Onstad, Cheryl
Peckman, Kathryn
Peterson, Karen
Peterson, Pat
Richards, Dorothy
Salaway, Heidi
Sato, Yoshiko
Schoenfelder, Coralea
Skatvold, Diane
Sutton, Bob
Van Buskirk, Joan
Vant Hul, Roger
Waff, Barbara
Walker, Barbara
Weiler, Marlys
Zystra, Sharon

In-Kind Organizations

Augustana College Students
Beta Sigma Phi

BLC Social Concerns Committee-Brandon
Enright, Jan-Augustana Library
First Presbyterian Church
Good Hope Lutheran Women-Willow Lake
Gloria Dei Lutheran Church-Garden Group
Grace Lutheran Hannah Circle
Grace Lutheran -Sisseton
Lawns Unlimited of Freeman
North Preston Lutheran Women-Lake Preston
Prairie Fire Internet Technologies LLC
Preceptor Laureate
Ronald McDonald House
Our Redeemer Lutheran Quilters-Bryant
Our Savior's Lutheran Goodness Circle
Our Savior's Lutheran Rachel Circle
St. Vincent de Paul Conference
United Methodist Women Quilters

Special Events

Human Race-Participants
Barbee, Mrs. Mary
Bolson, Ann & Steve
Dunham, Don Jr
Ericson, Ginny
Fiegen, Jackie & Jeff
Flynn, Sue & Mike
Fredrikson, Roger & Ruth
Gulson, George & DeLoris
Humphreys, Don W
Hyland, Lowell & Norma
Iseminger, Orpha
Jorgenson, Phyllis & Glenn
Ludlow, Bob & Pat
McEaney, Msgr John
Mellegard, Linda & Steve
Parry, Ruth & Rod
Peterson, Doug & Louise
Rossing, David & Louise
Rossing, Ron & Martha
Solem, Herman & Maizie
Stensland, Vern & Rhoda
Thomas, Dave & Nancy



Life's most persistent and urgent question is:
What are you doing for others?

-Martin Luther King, Jr.-

We make a living by what we get we make a
life by what we give.

-Winston Churchill-

Small things, done with great love, brings joy
and peace.

-Mother Teresa-

History Points

Con't from page 2

of moving so coverage for the house became a major priority. This was also the time the Board began to discuss a program for children living in the area and a desire to purchase the lot to the north of the house. John Gehm began writing a grant to the Bush Foundation for funds to purchase the property we would need to provide a playground. A lot sat vacant just to the immediate North of the house, and there was hope to purchase that property.

Around this time, we began to lose some members of the board and new ones agreed to join us in this ministry. Mike Flynn and Mary Lou Steib joined us in our efforts. Mike had designed and donated the beautiful angel sign that sits on the North corner of the property. Mike made a commitment about a year before this to donate a sign for the house, and when he was approached about a sign a year later, he willingly donated time, materials and labor to place the beautiful sign that still sits on the property today. There is an angel on the sign, and many call the Family Connection Hospitality House the "Angel House". The angel is a reminder of the verse that under girds our efforts, Hebrews 13:2, "Do not forget to entertain angels, for by so doing, many have entertained angels unawares."

Mary Lou joined our board and brought her financial planning background. She helped Family Connection to make the best use of the funds we have been given and gain the greatest return for our dollar. What a blessing she has been to this ministry in the years she served and since.

In the fall of 1996 a proposal was submitted by Ray Harris for an Eagle Scout project that would entail replacing some of the windows on the north side of the house and planting a tree on the boulevard on the South parkway. That proposal was accepted and the plan was implemented.

There were an increased number of requests for speaking engagements from different areas of the state. Jeff Reynolds of Midwest Media Productions donated time and tape to make an eight minute production and walk through of

the house that could be mailed to those who wanted to know more about the ministry of Family Connection.

At this same time, South Dakota Public Radio invited Family Connection to provide information for a radio segment focusing on the needs of the families of those with an incarcerated loved one. This opportunity provided further information to those who may have never considered the needs of the families and children whose loved one is incarcerated. Paulette Pippert interviewed Anne Burkard for that spot.

The guests came that summer and fall, and our work was under way. Unfortunately, we had some unwelcome guests as well. Our uninvited guests were termites, so like all homeowners, we had to deal with the problem, and Olson Exterminating eliminated the uninvited little guests. (Thank goodness, we have not seen those back!!!!)

In the early days of the project, we explored different ways to let the family members know that Family Connection was there to provide our support. The numbers of visitors was low in the early winter and late fall. The video tape of a walk through of the house was run daily in the prison, but communication with the families was still not as clear as hoped.

The ceiling in the small house was in desperate need of repair at this point since the roof was finally repaired, that project was the next undertaking. This was followed by an offer by Aid Association of Lutherans from Renner, Eastside, Benton and West Nidaros Lutheran to participate in the building of a garage and storage for the Family Connection just to the north of the 414 West 7th Street property. Those plans were discussed and when the weather would cooperate, the garage would be built so that the director could park her car in a safe place, and extra storage could be available.

In December of 1996, Family Connection was awarded a \$1,500 grant from the York Children's Foundation to help begin a project to benefit the child with an incarcerated parent. Family Connection would also host an examiner

from the Bush Foundation regarding a grant that was submitted for the project in the month of December.

There were many things happening at the house during that first full winter. This would be the first Christmas with guests in the house. A group called, "Martha and Mary Inc." came with their children and a live Christmas tree and homemade ornaments and decorated our tree for the guests. They not only decorated the tree and house, they left gifts for the guests. This group included the Stan Biondi family, the Monte Walz family, the Brian Mortenson family and the David Austad family. The children and families who came were in awe of the generosity of folks they did not even know. The outdoor décor and lights were provided by Bishop Norm Eitheim and his wife Clarice and Floyd and Carol Prouty.

So went the first year of the Family Connection operation. A total of 78 guests and 28 children spent time at the house since the doors opened. The start was slow, and many changes were being made, but Family Connection was serving the families who needed the resources we had to offer. Visitors came from Illinois, Massachusetts, Texas, Wyoming, Florida, Wisconsin, Colorado and of course South Dakota. Each person who came felt blessed by those who have given of themselves to make this house a reality.

As we reflected on that first partial year of serving, all felt that God has blessed this ministry and that those who came were surrounded by the support and care of a community of folks they did not even know, but that cared about their welfare. The praise goes to the One who carried this project to this point.

We are updating our Newsletter. Please let us know if you are receiving duplicate newsletters, and/or if your address is incorrect or incomplete-address, city and zip code.

My Tax Deductible Gift:

Name: _____

Address: _____
Street City State Zip

Gift Enclosed: \$ _____ I will pledge: \$ _____

Please return this pledge card or place your donation in the envelope provided.

Thank you!

If there is an error in your mailing label or if you know of someone who would like our newsletter, please let us know!

Please check the appropriate boxes for more information:

- I would like information about the Angel Program
- I would like a speaker for our group or service club
- I would like to tour the house
- I am interested in sharing my talents with Family Connection



Family Connection

PO Box 100
Sioux Falls, SD 57101

Non Profit Org.
U.S. Postage
PAID
Sioux Falls, SD
Permit No. 7605

“Keeping families together while they
are apart.”



“Do not forget to entertain
strangers for by so doing,
many have entertained
angels unawares” Hebrews
13:2

Check Us Out on the Internet!
www.augie.edu/related/familyconnection
Note new web page address!

Our e-mail Address is:
familyconnect@hotmail.com



From all of us at Family Connections
wishing all of you a Merry Christmas!